



IL RUOLO E I RISULTATI DI 10 ANNI DI COLLABORAZIONE

POLIZIA MUNICIPALE-UNIVERSITÀ DI BOLOGNA

Elia Del Borrello

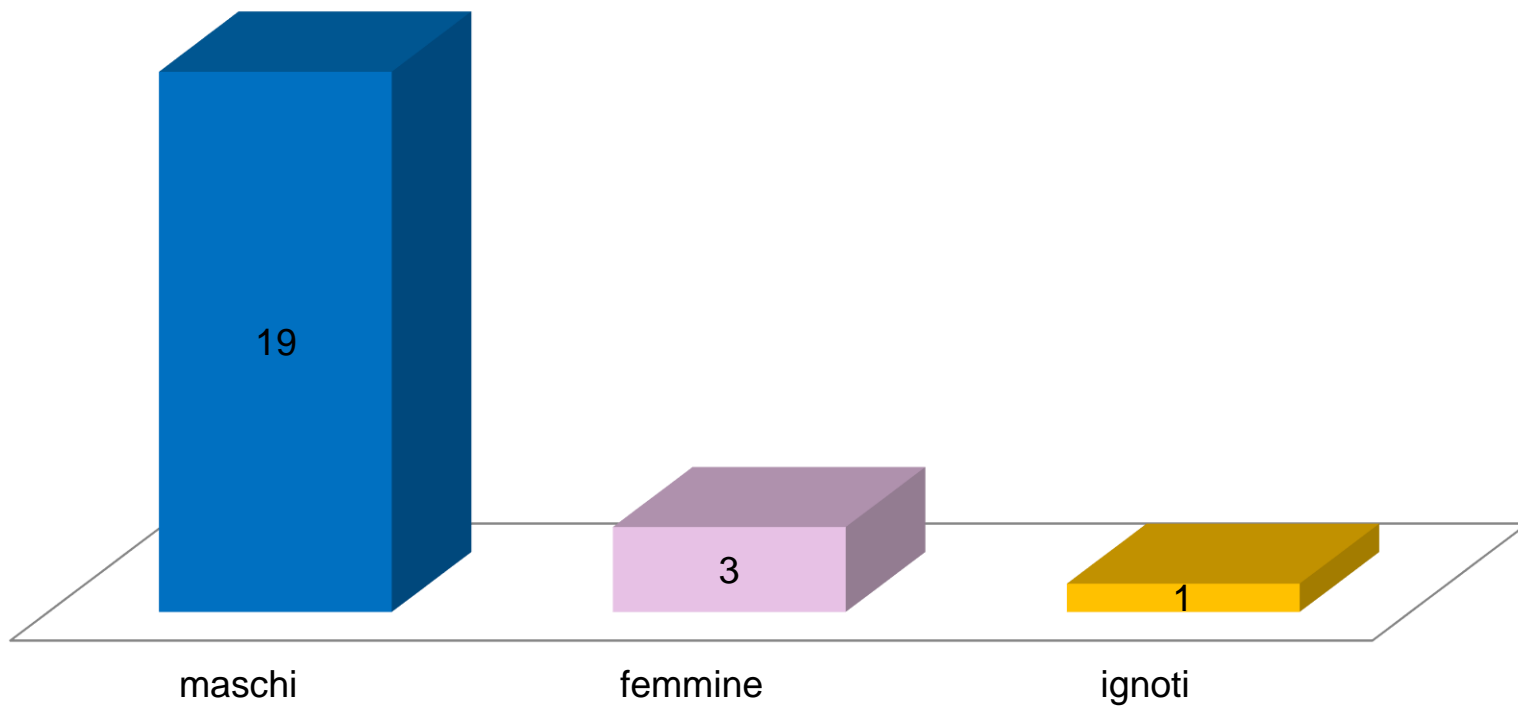
*Marco Garagnani, Francesca Rossi, Chiara Cavalieri,
Raffaella Roffi, Rita Novella Rizzetti*

**Laboratorio di Tossicologia Forense
c/o Istituto di Medicina Legale
Dipartimento di Scienze Mediche e Chirurgiche**



2006 (tot. 23)

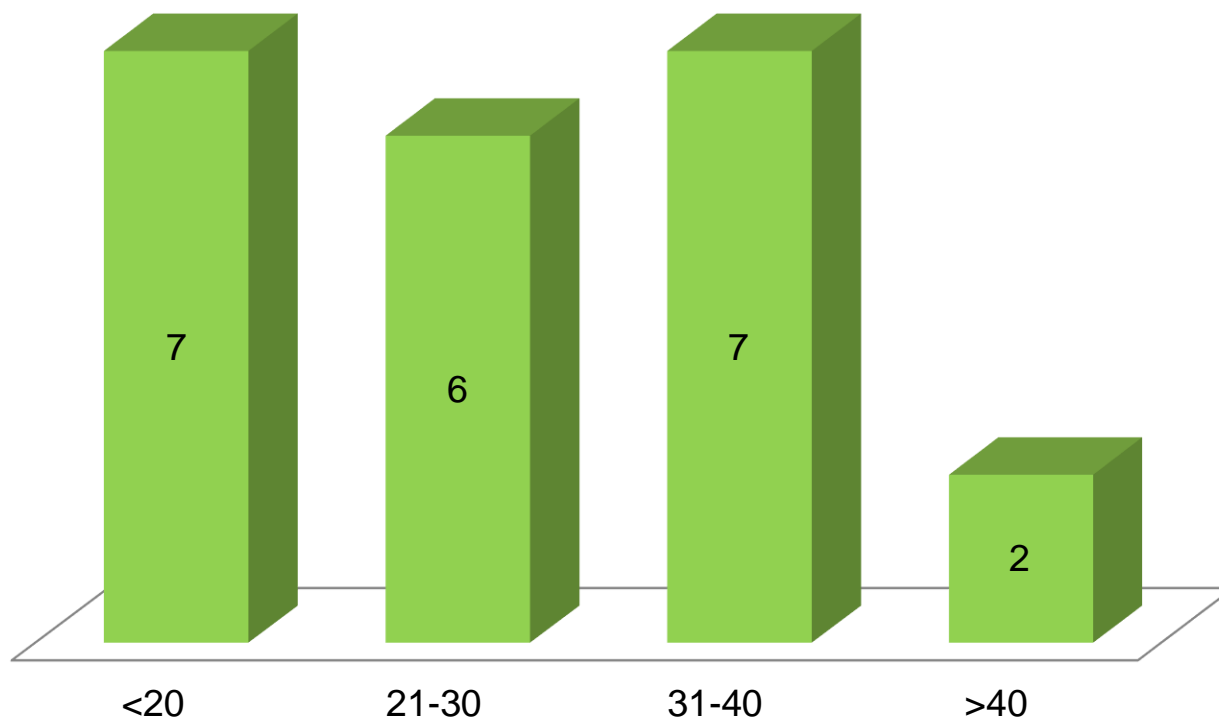
SESSO





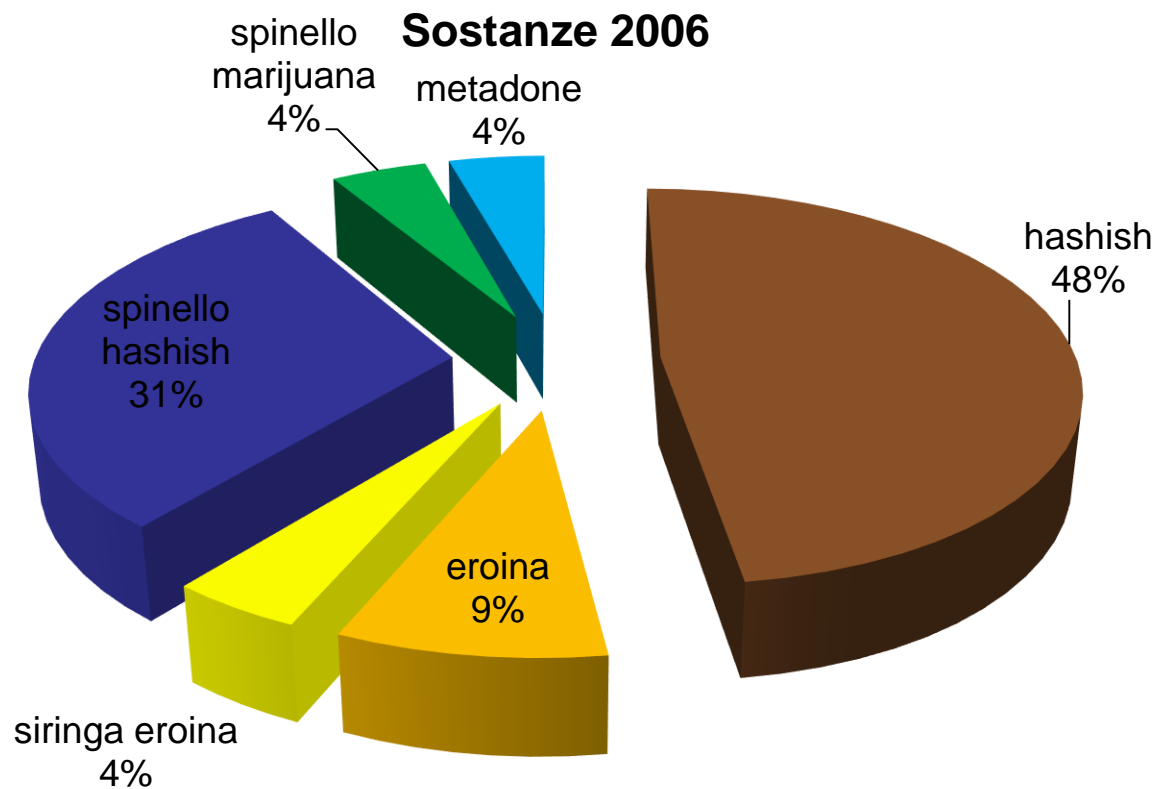
2006

Età





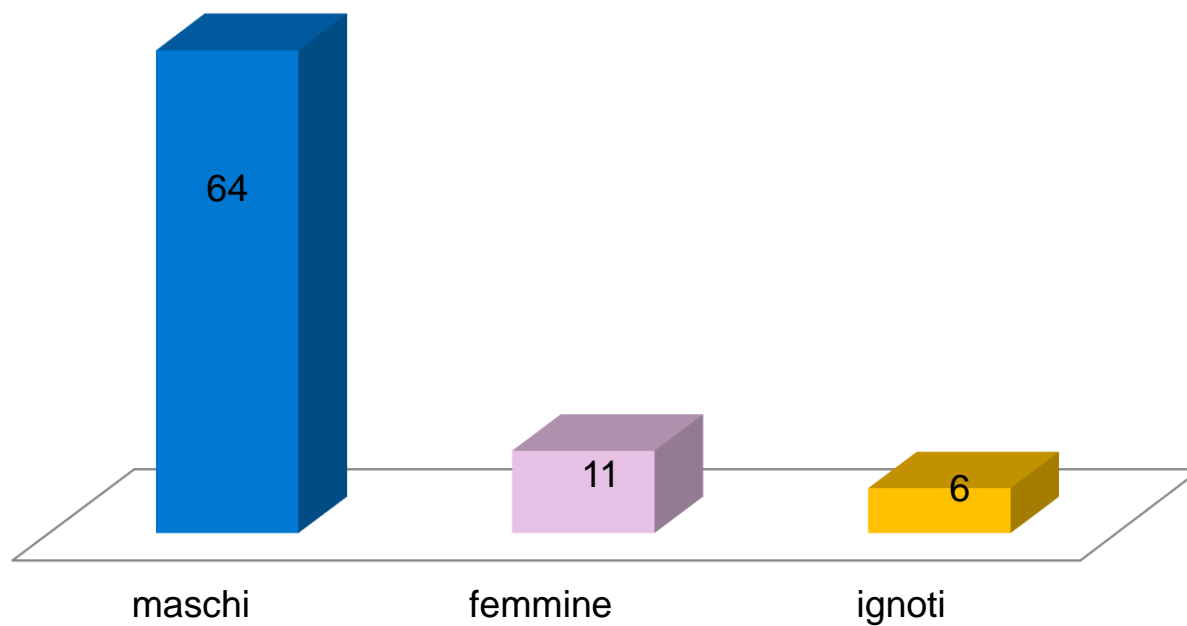
2006





2007 (tot. 81)

Sesso

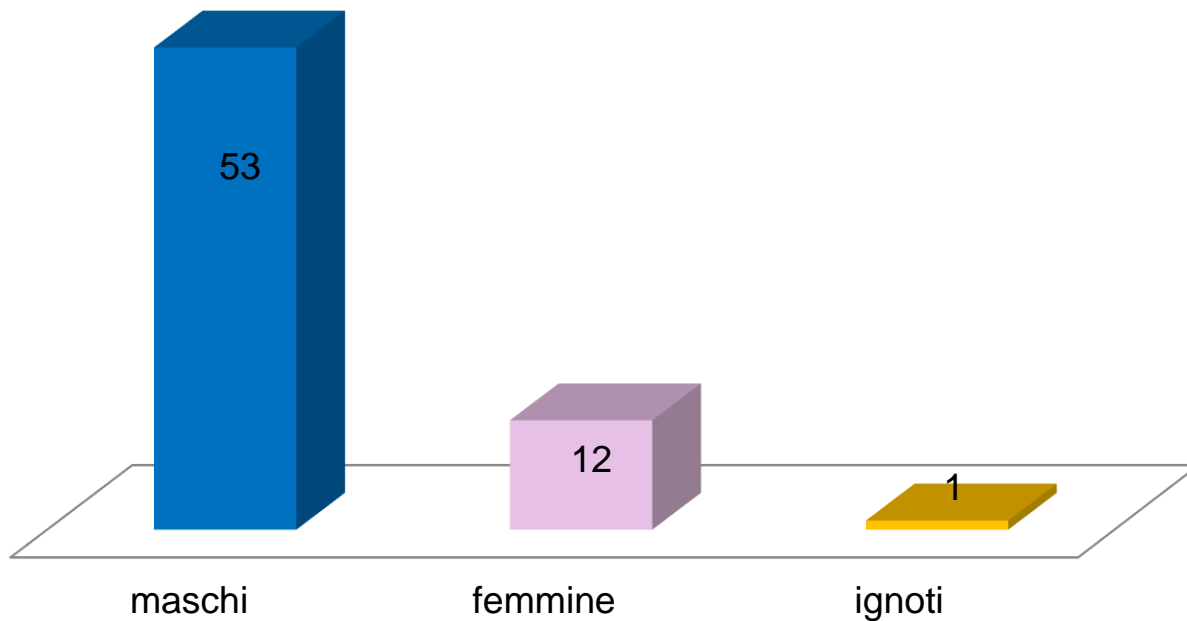




2008 (tot. 67)

Sesso

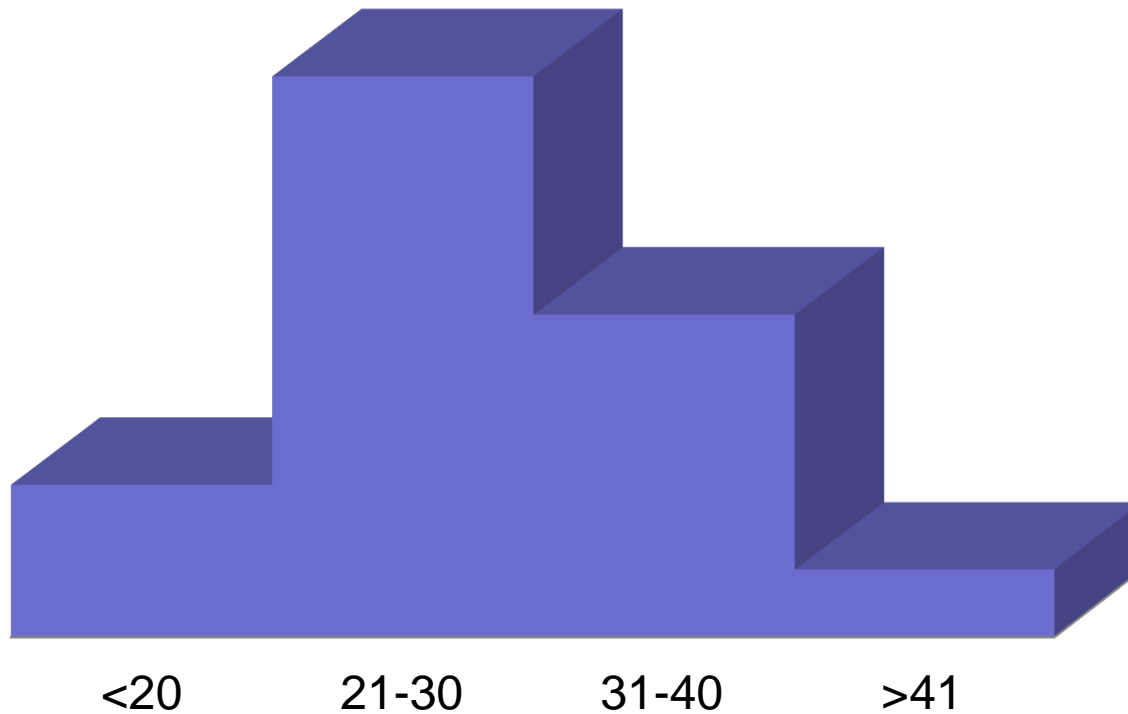
■ maschi ■ femmine ■ ignoti





2008

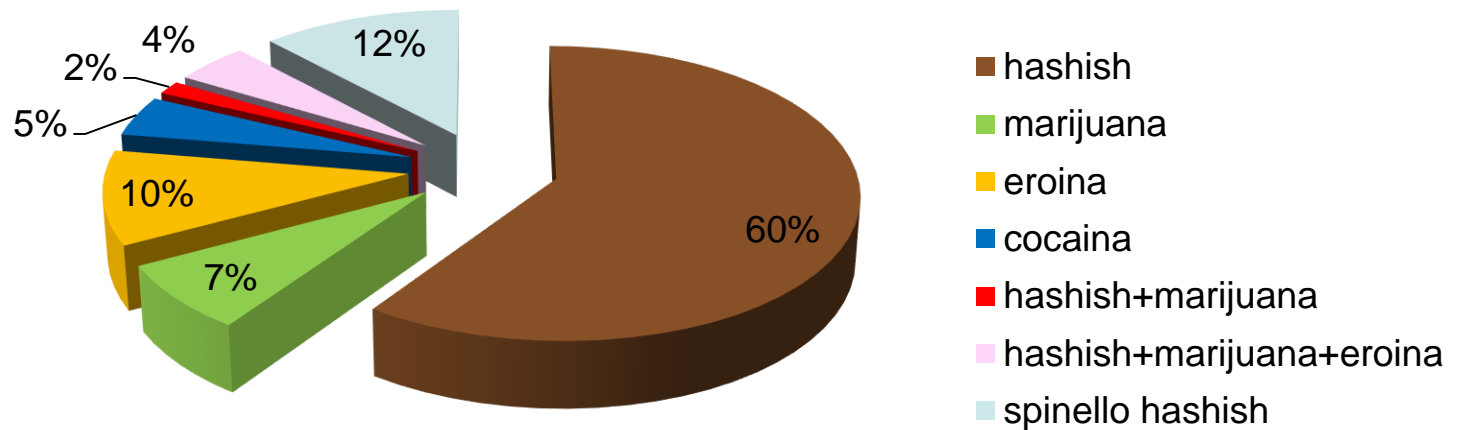
Età





2008

Sostanze 2008

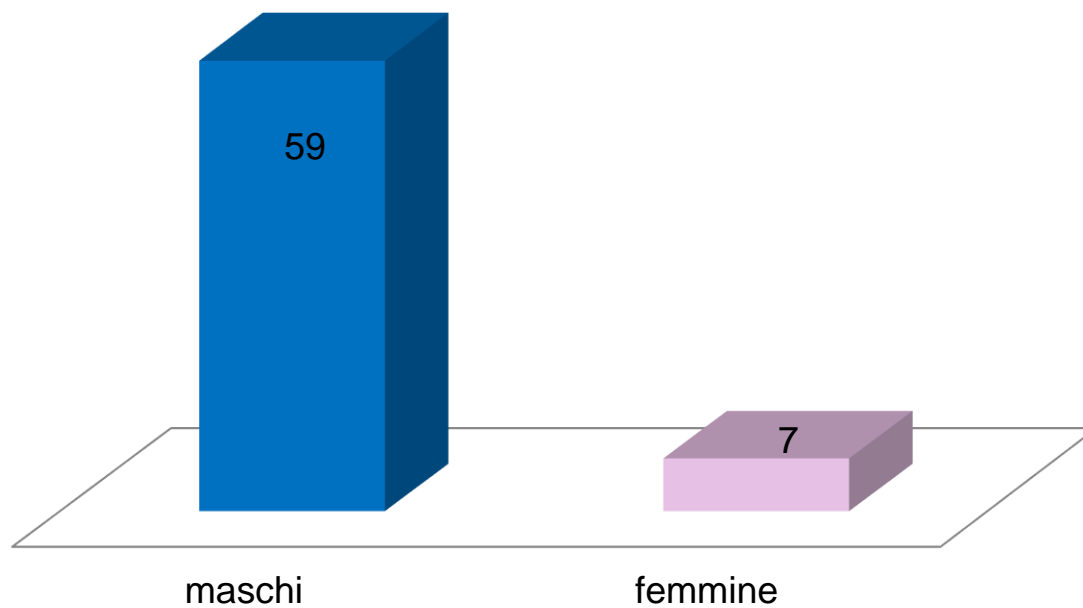




2009 (tot.66)

Sesso 2009

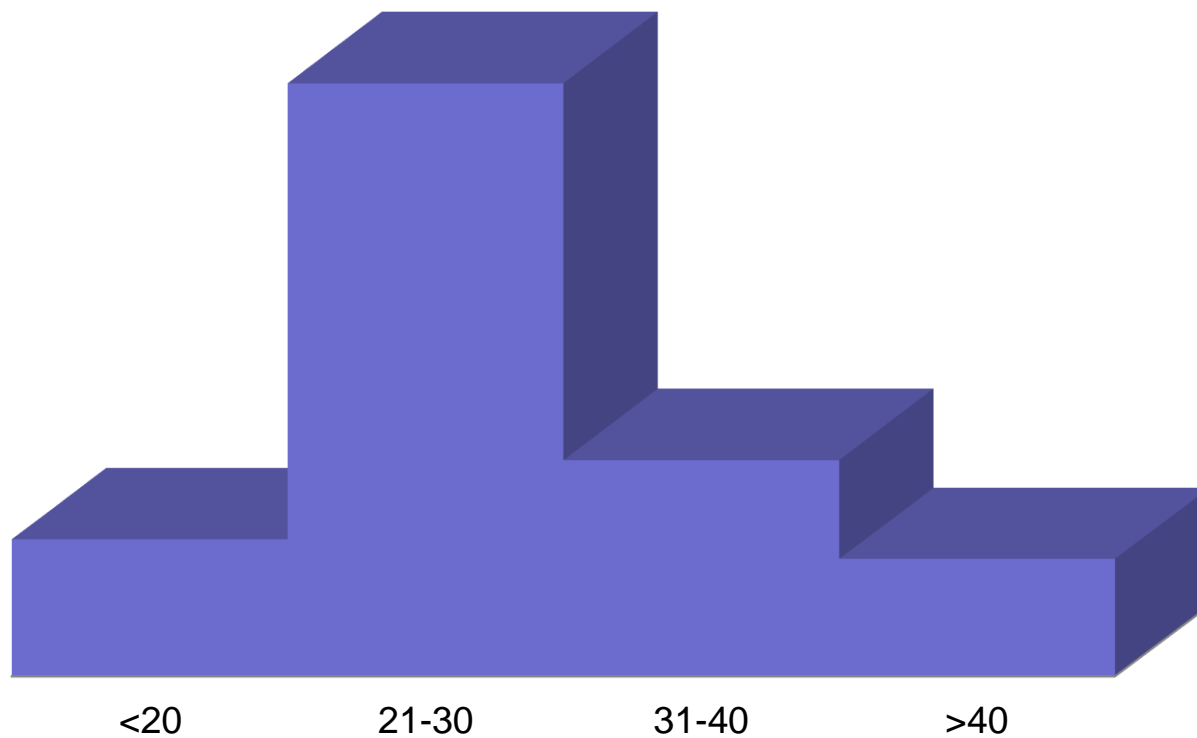
■ maschi ■ femmine





2009

Età 2009

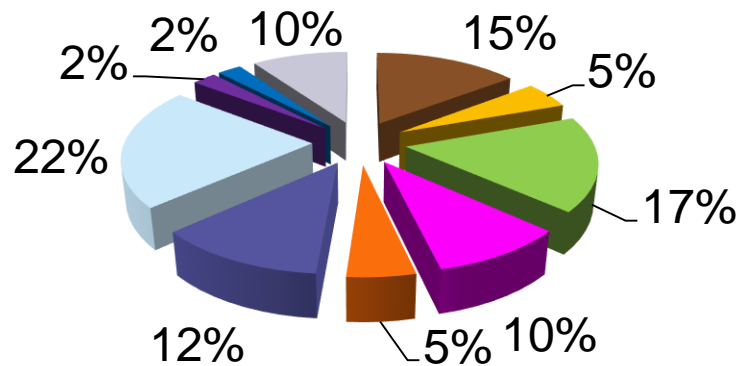




2009

Sostanze 2009

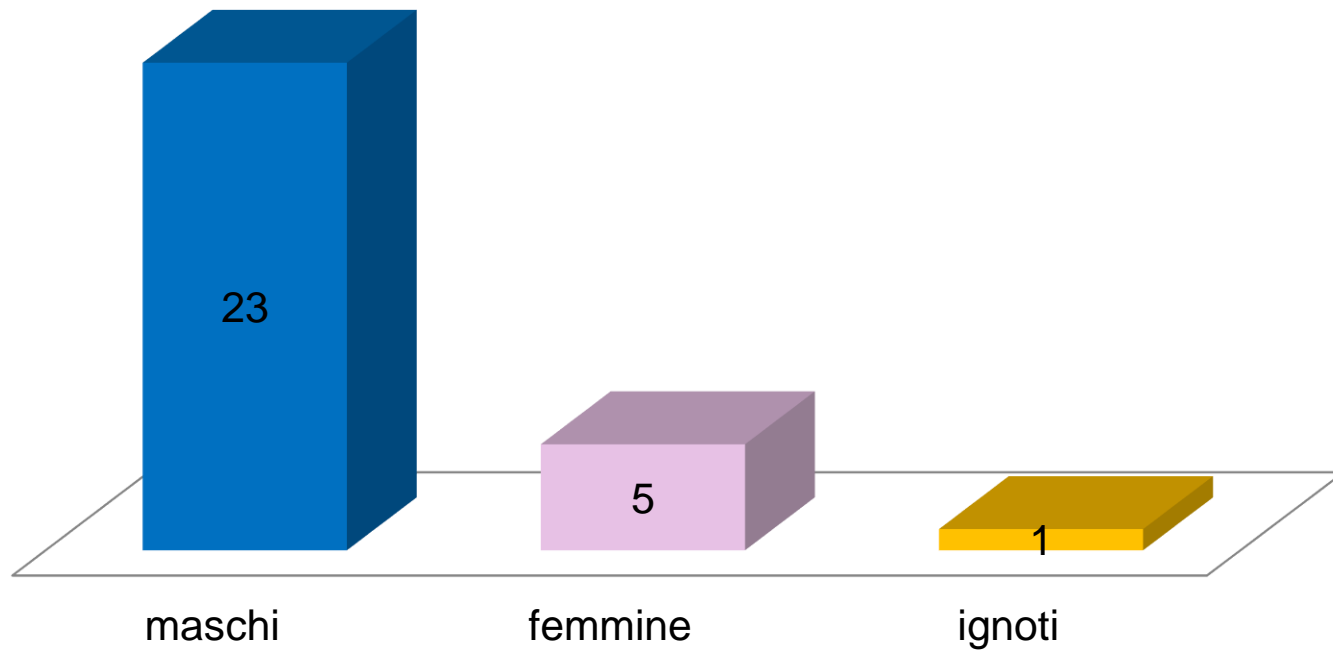
- hashish
- eroina
- ketamina
- spinello hashish
- ketamina+mdma
- marijuana
- cocaina
- siringa eroina
- spinello marijuana
- metadone





2010 (tot.29)

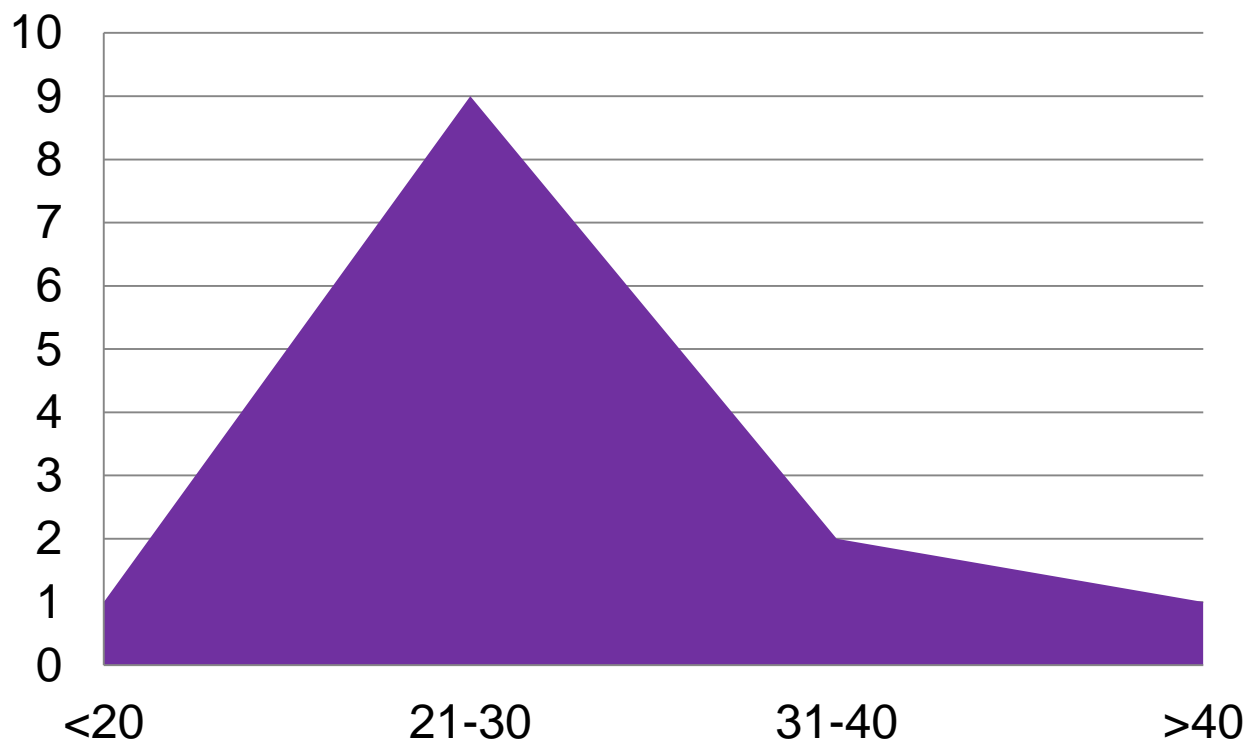
Sesso 2010





2010

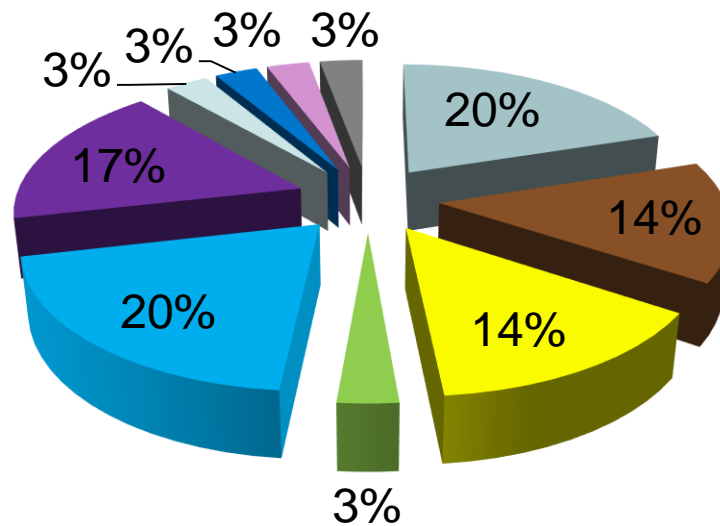
Età 2010





2010

- hashish
- eroina
- spinello marijuana
- metadone
- metadone+GHB
- marijuana
- marijuana+hashish
- spinello hashish
- buprenorfina
- eroina/metorfano

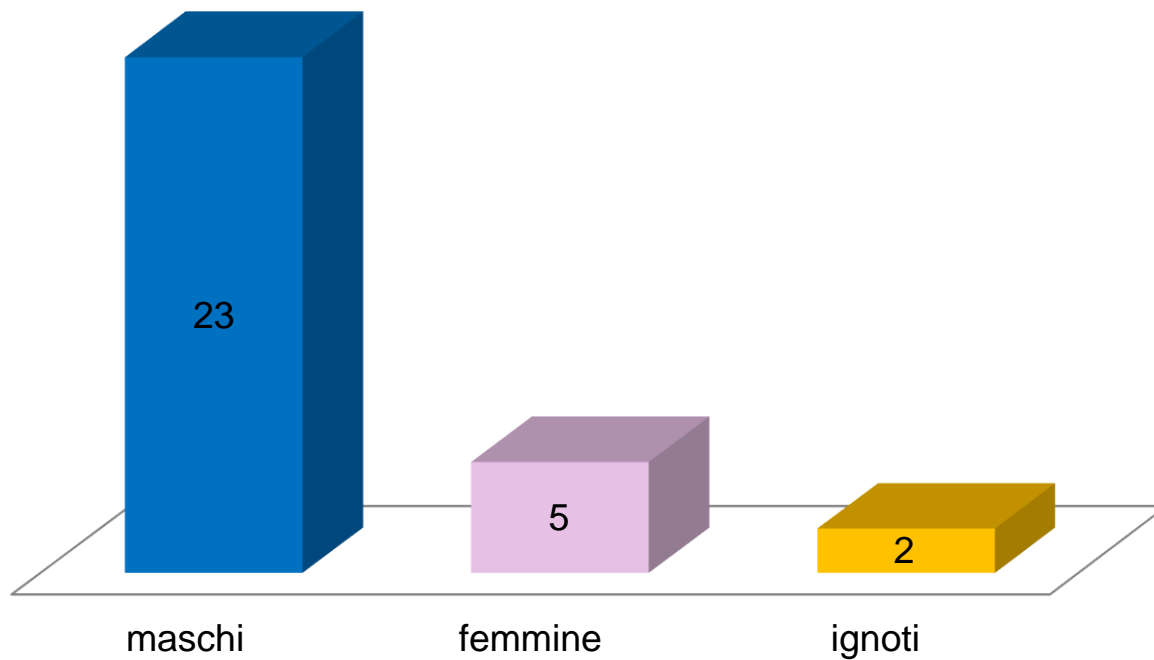


Inizio eroina con metorfano



2011 (tot 30)

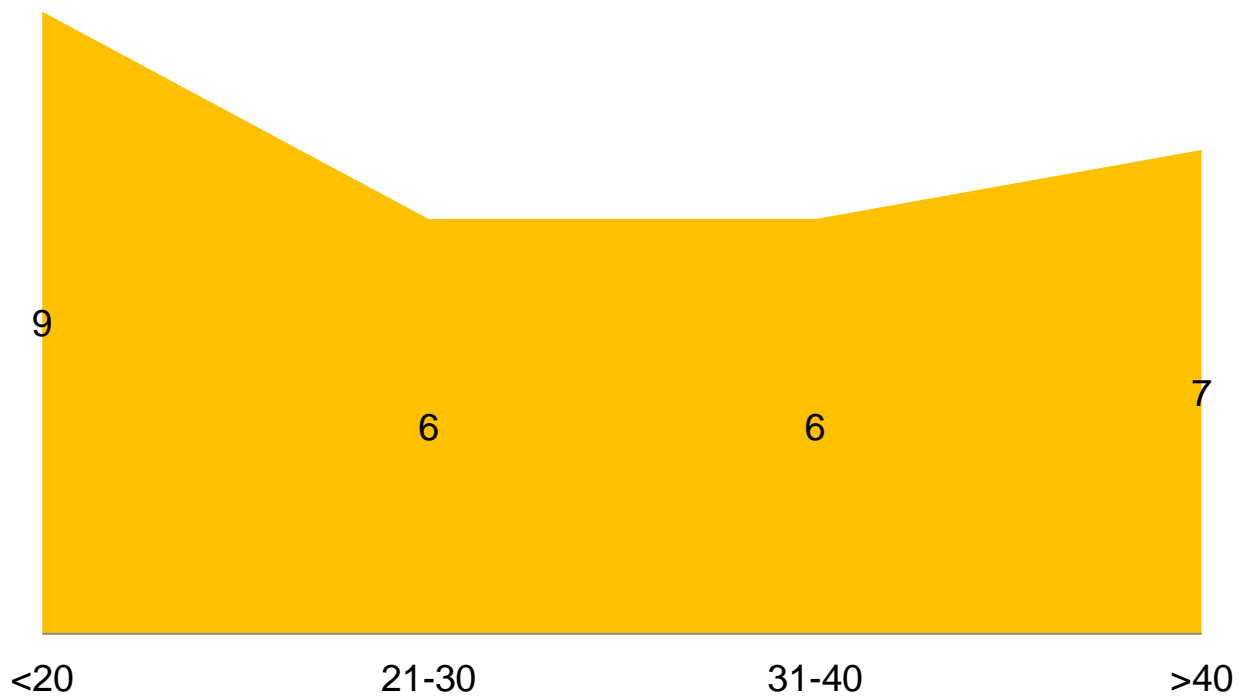
Sesso 2011





2011

Età 2011

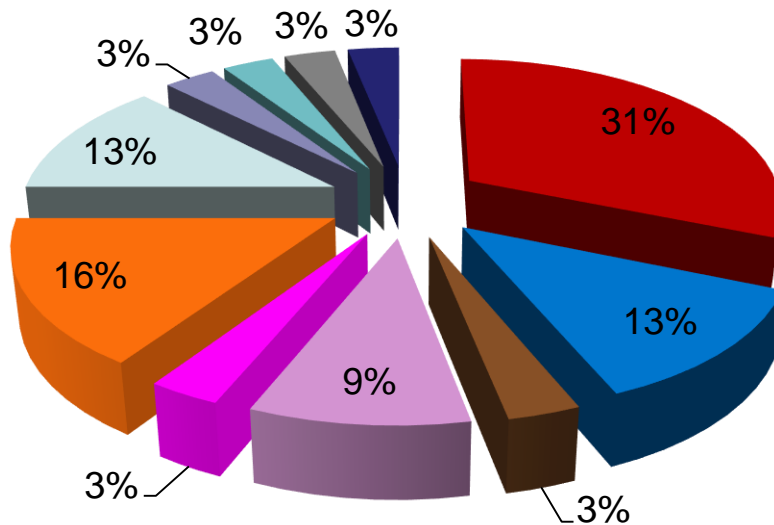




2011

- hashish
- marijuana
- cocaina
- eroina siringa
- hashish+marijuana+eroina
- spinello hashish
- eroina/metorfano
- clonazepam
- cocaina levamisolo
- non stupefacente
- MDMA+hashish

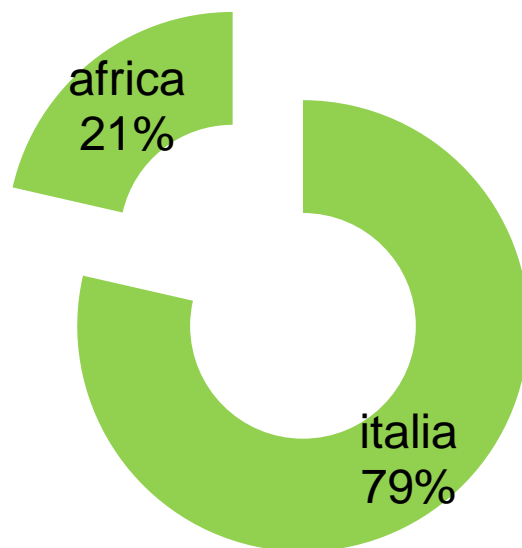
**INIZIO COCAINA
CON LEVAMISOLO**





2011

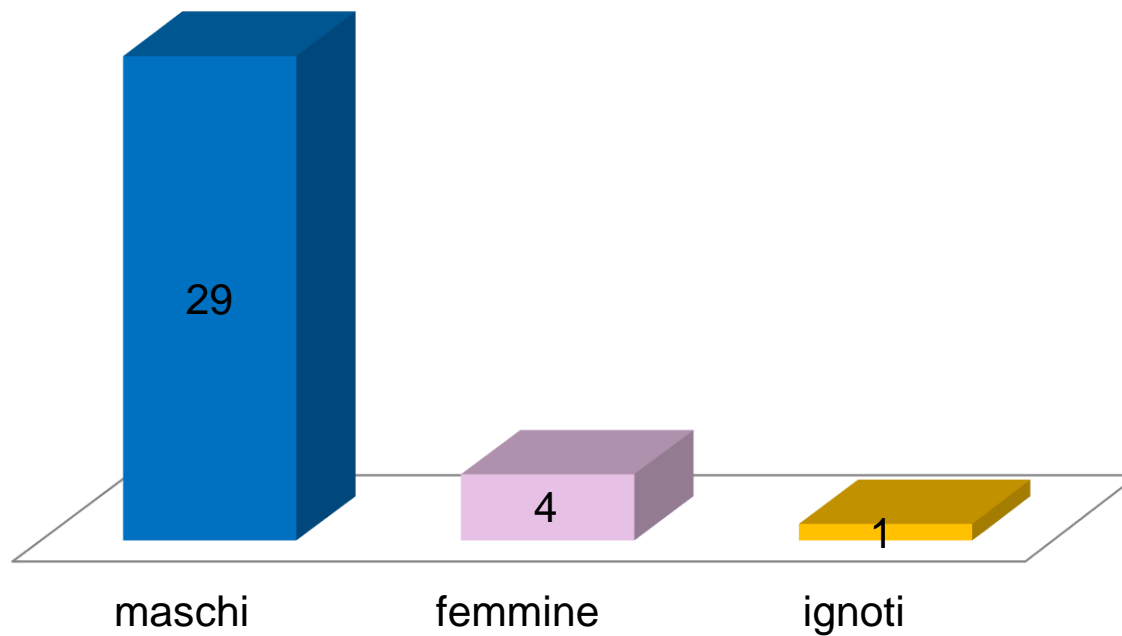
Nazionalità 2011





2012 (tot.34)

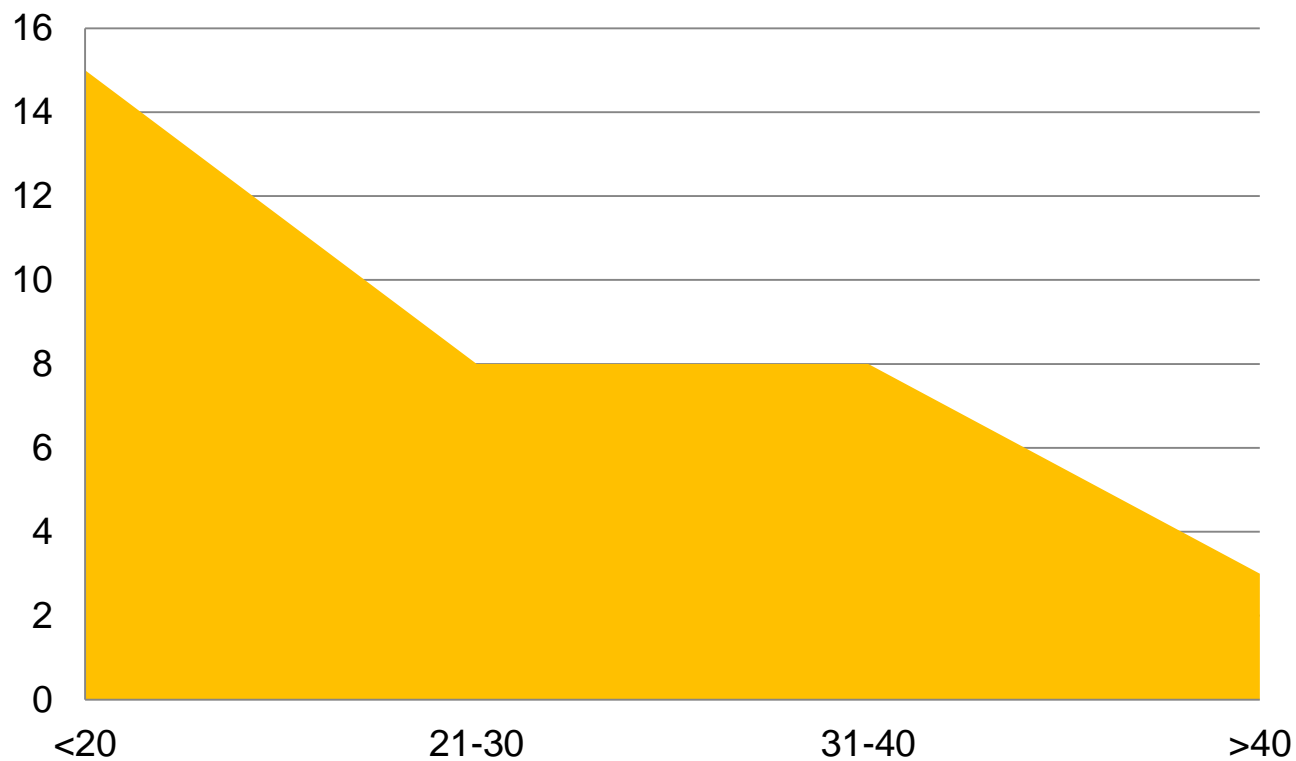
Sesso 2012





2012

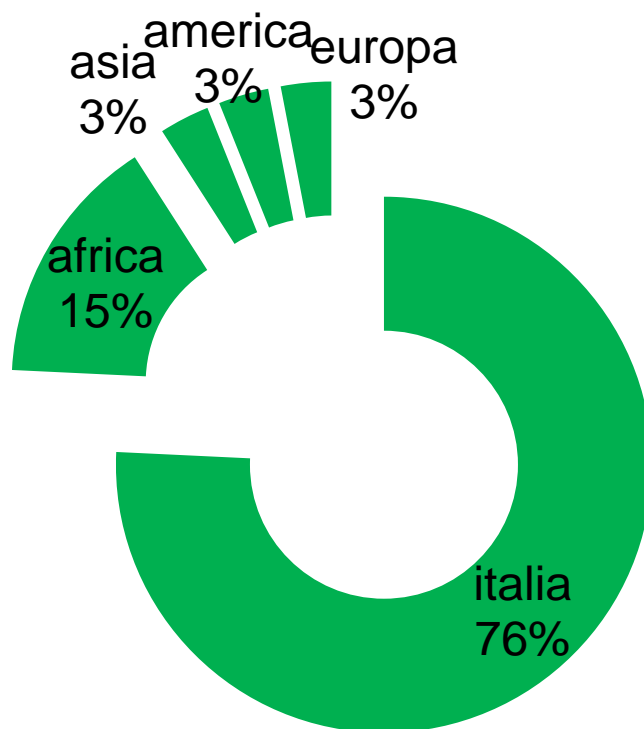
Età 2012





2012

Nazionalità 2012

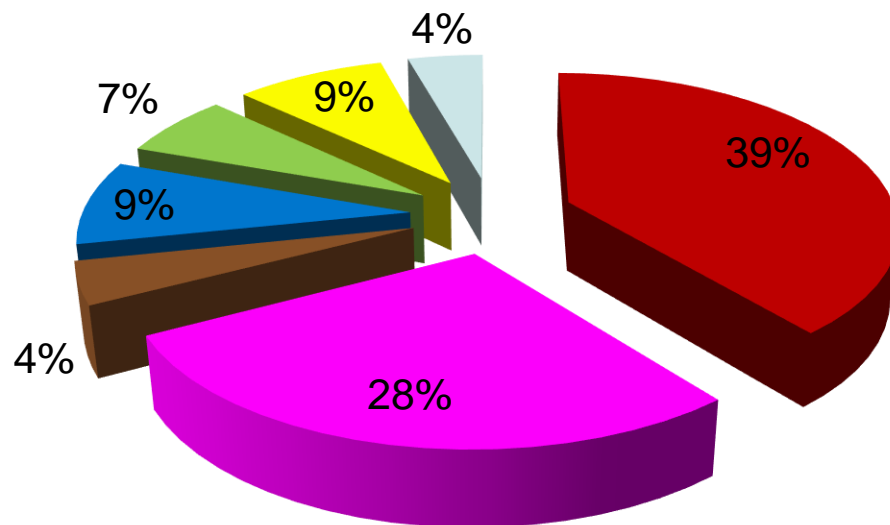




2012

Sostanze 2012

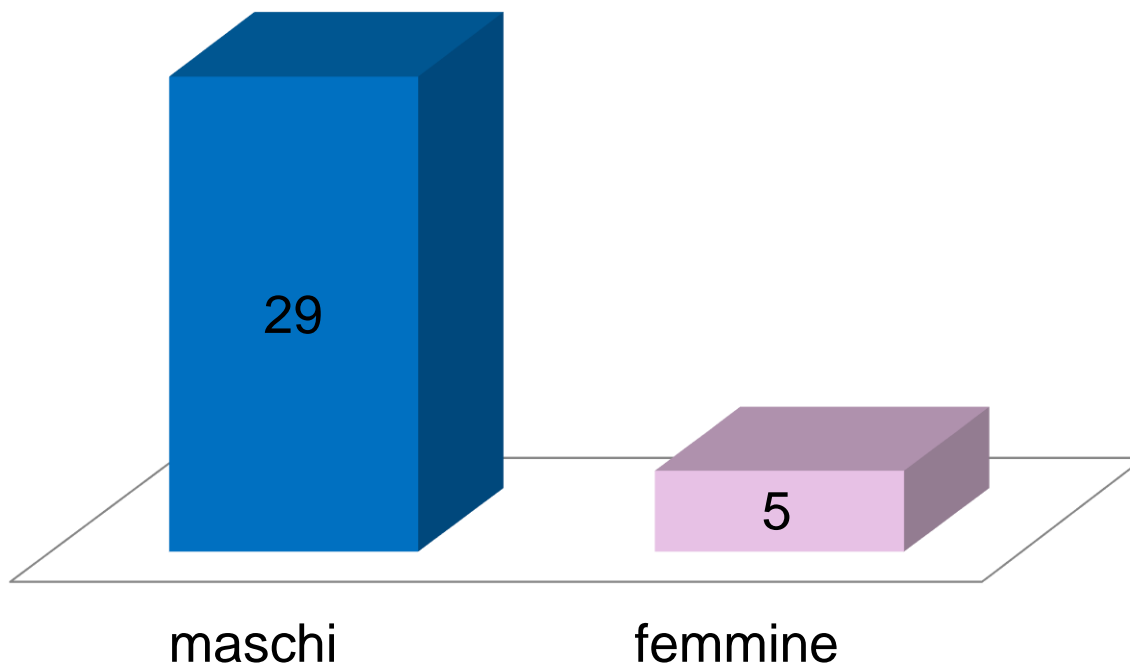
- hashish
- marijuana
- eroina/metorfano
- cocaina/levamisolo
- hashish+marijuana
- spinello hashish
- spinello marijuana





2013 (tot.34)

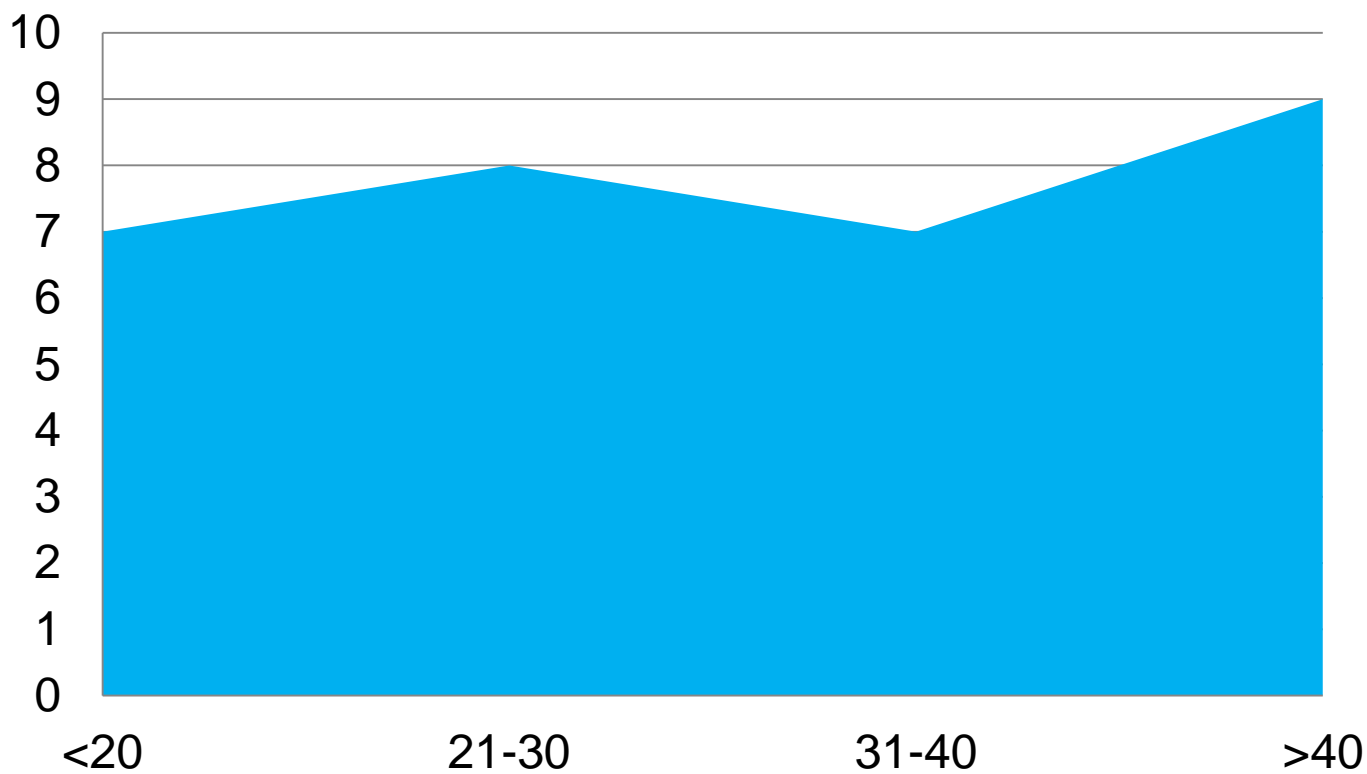
Sesso 2013





2013

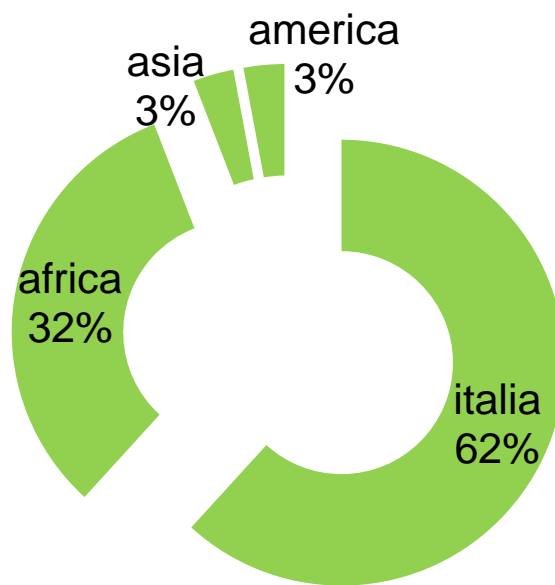
Età 2013





2013

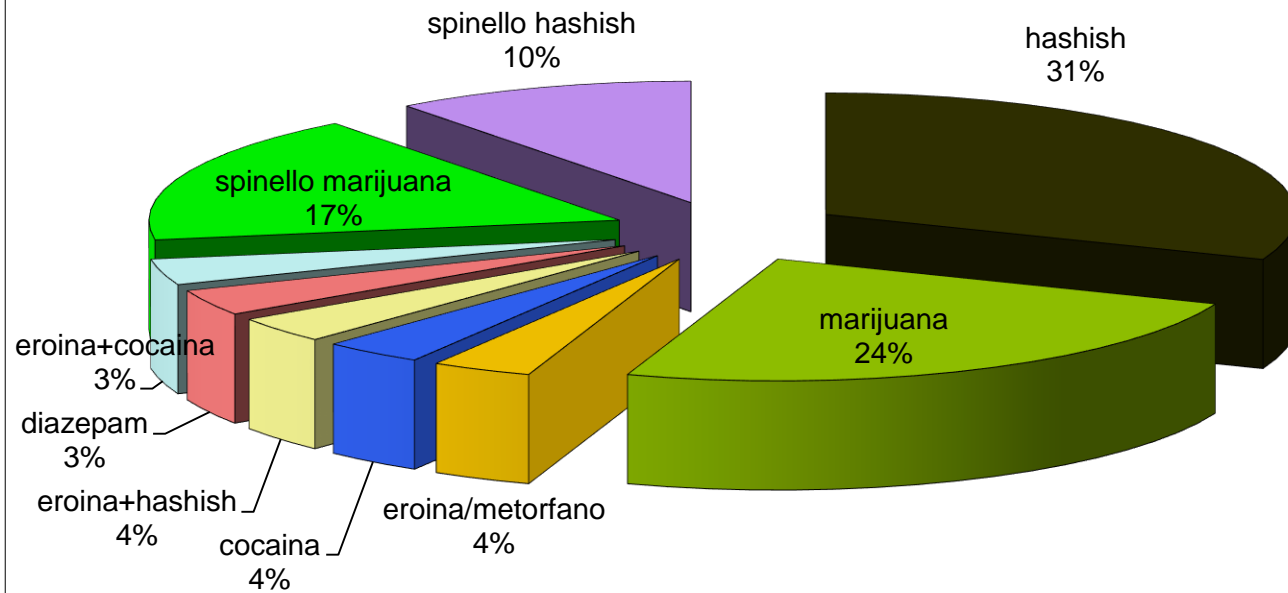
Nazionalità 2013





2013

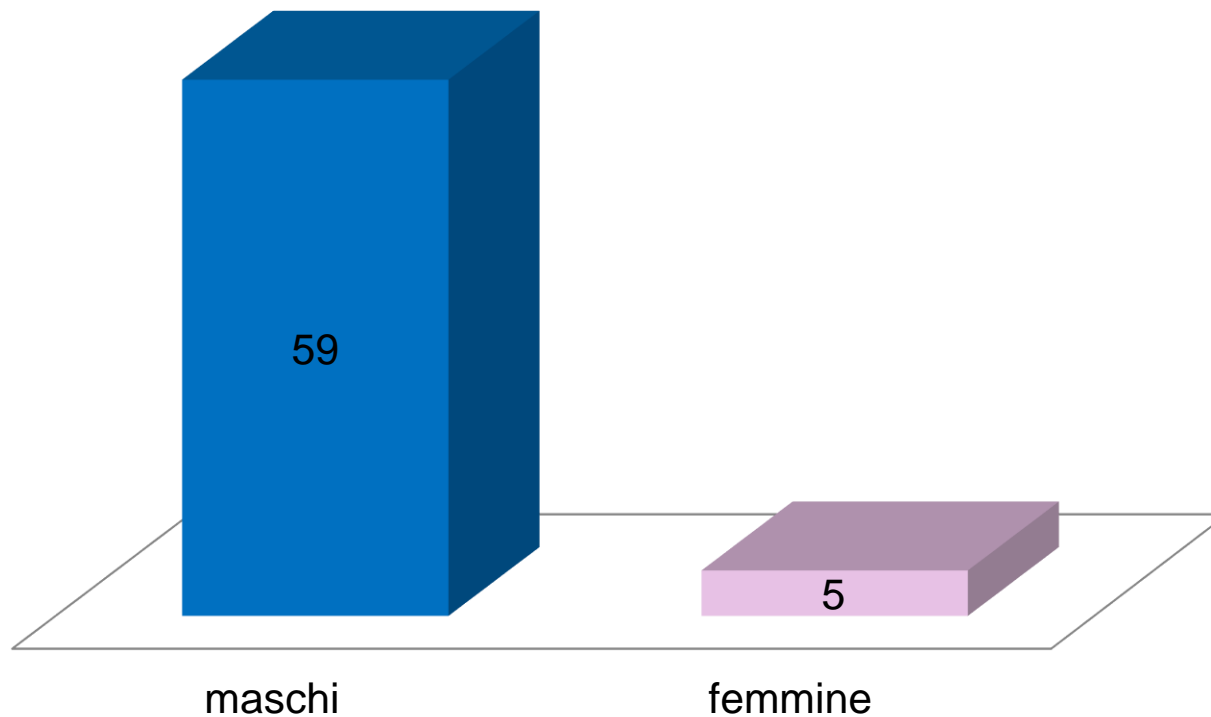
Sostanze 2013





2014 (tot.64)

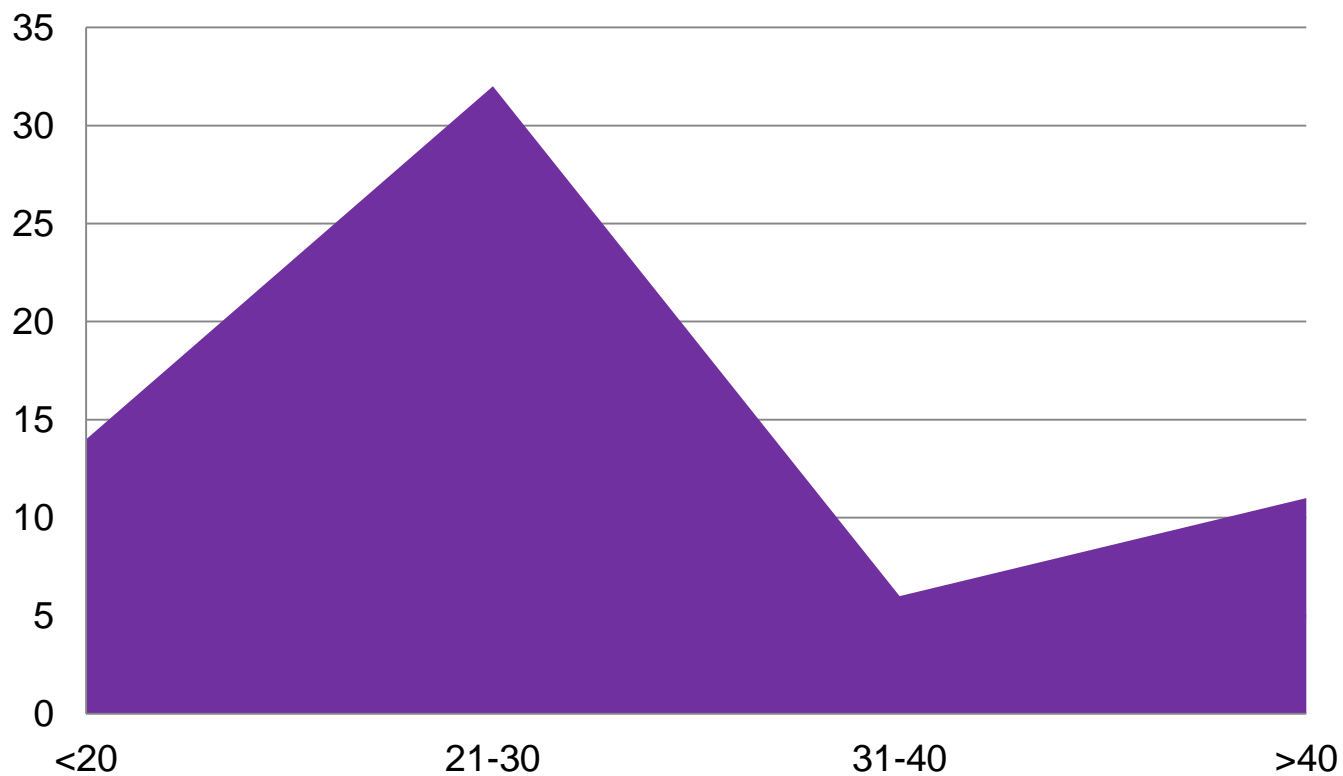
Sesso 2014





2014

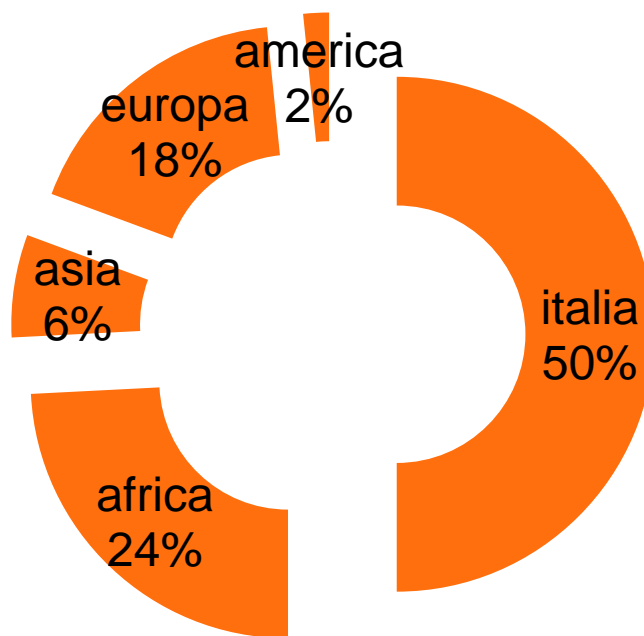
Età 2014

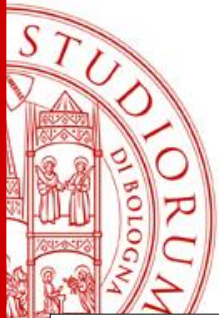




2014

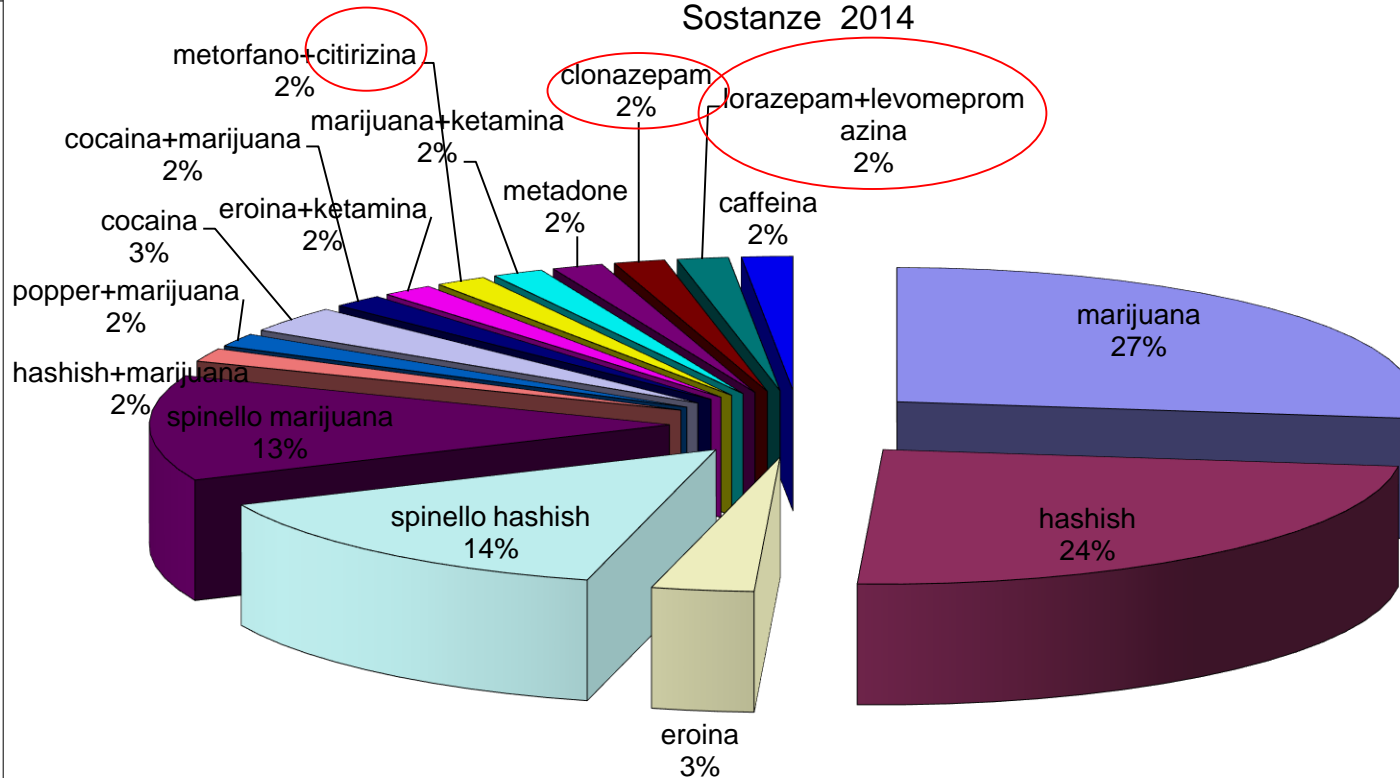
Nazionalità 2014





2014

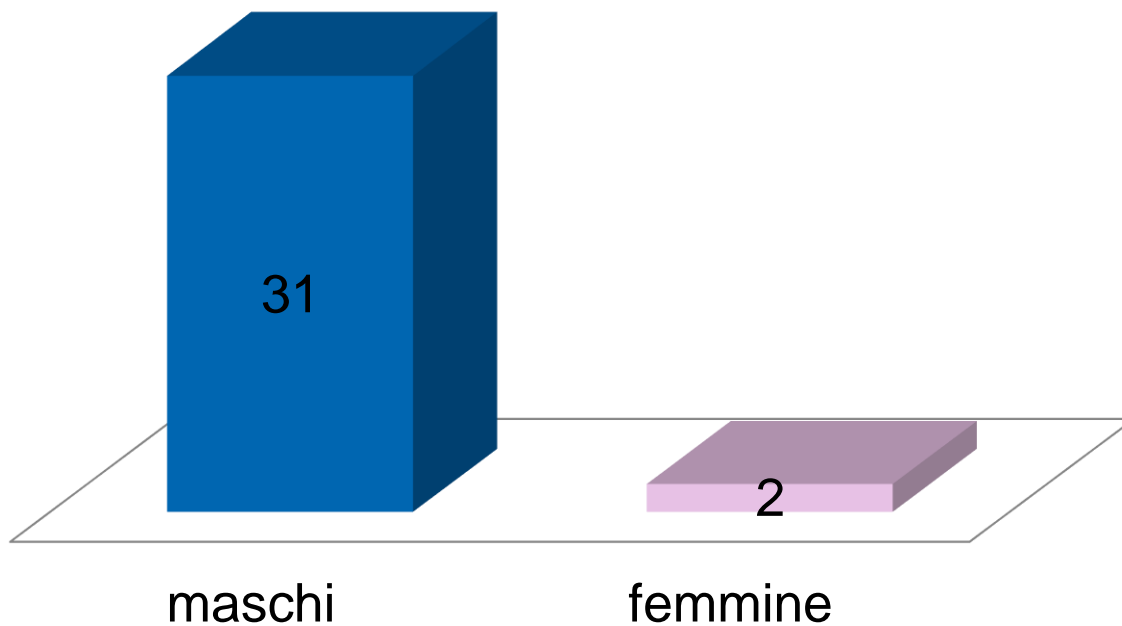
Sostanze 2014





2015 (tot.33 fino ad ottobre)

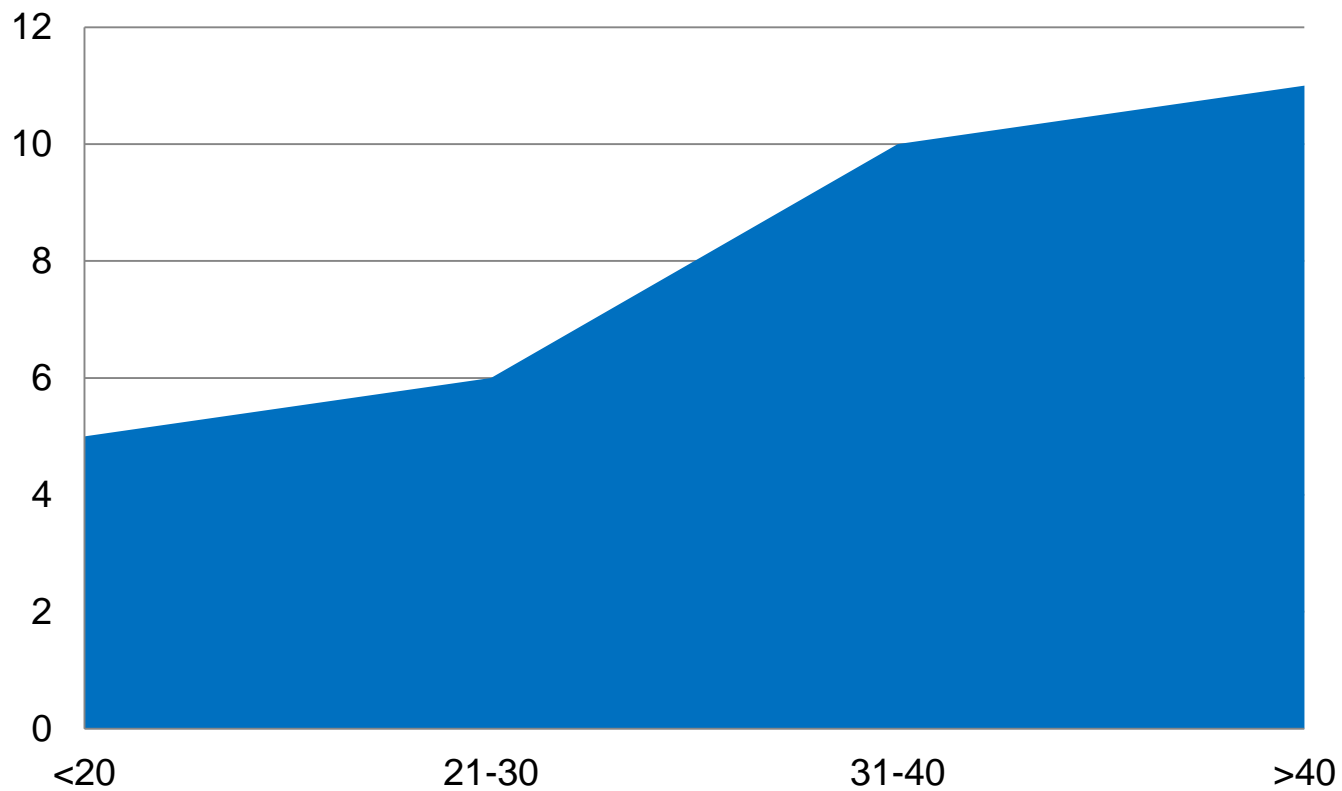
Sesso 2015





2015

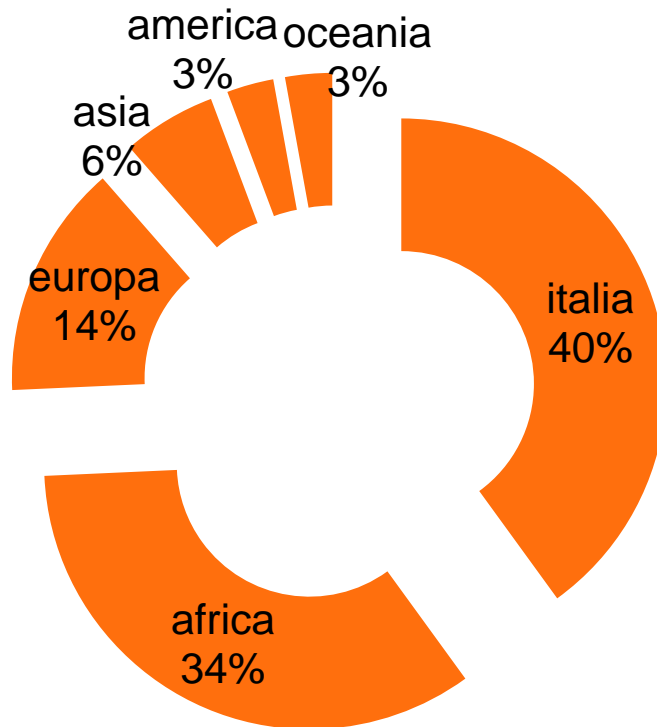
Età 2015





2015

Nazionalità 2015

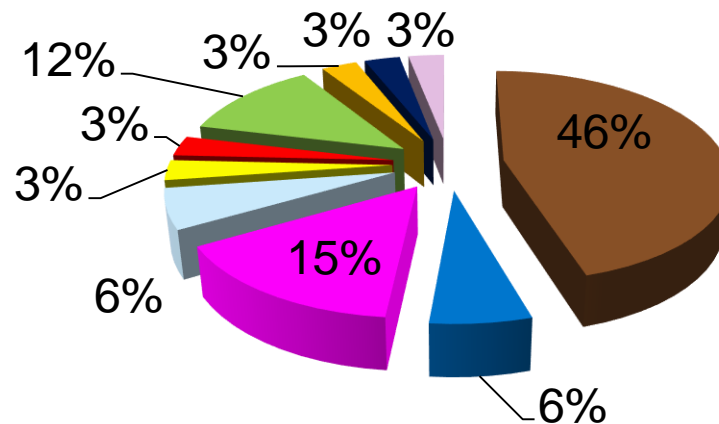




2015

Sostanze 2015

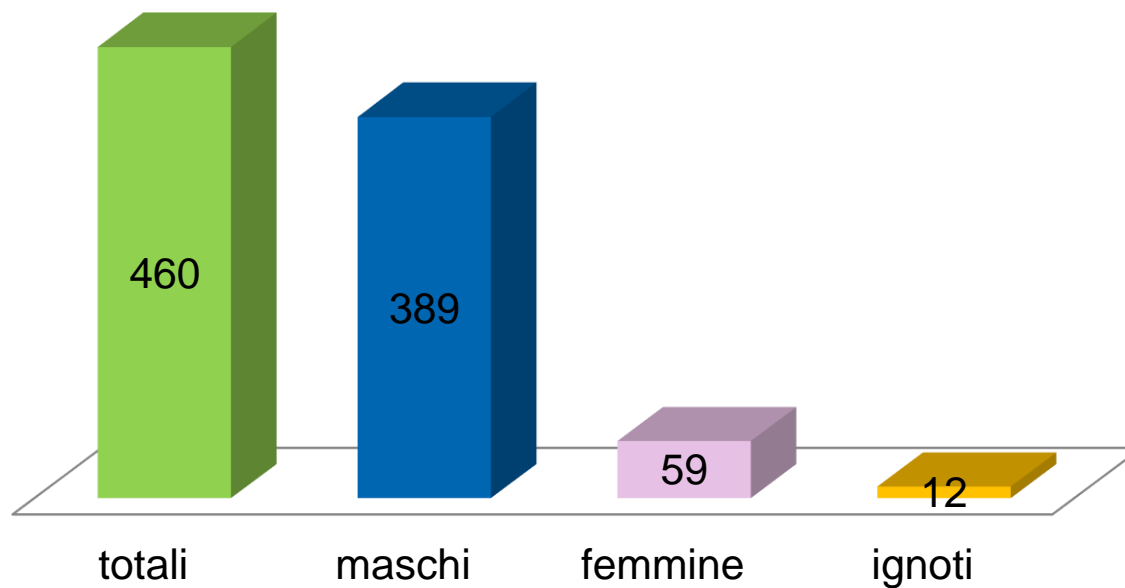
- hashish
- cocaina/lev
- metadone
- spinello hashish
- hashish+marijuana
- marijuana
- eroina/met
- clonazepam
- spinello marijuana
- siringa cocaina





10 anni

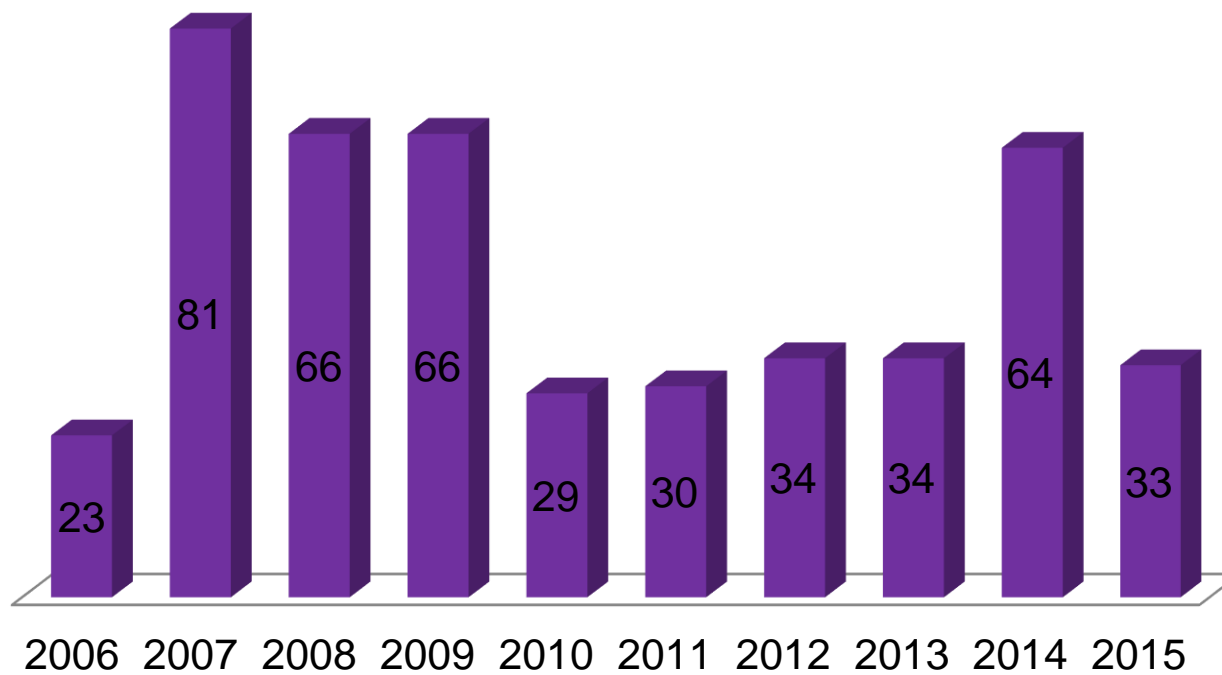
Totale Sesso





10 anni

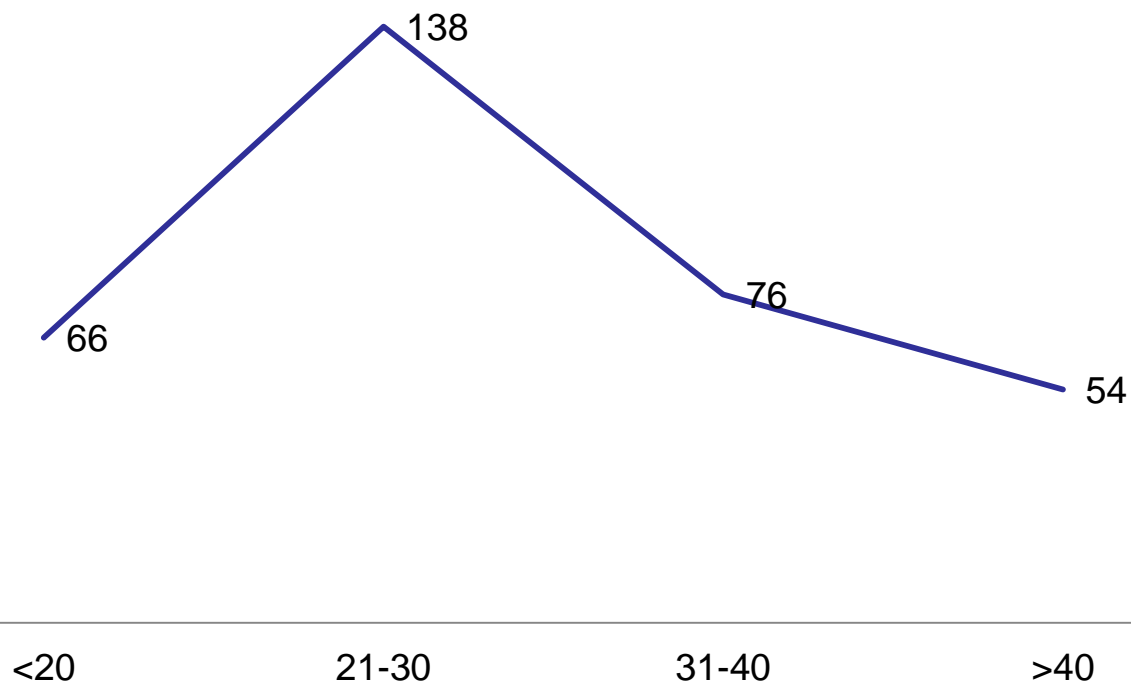
Totali Sequestri 10 anni





10 anni

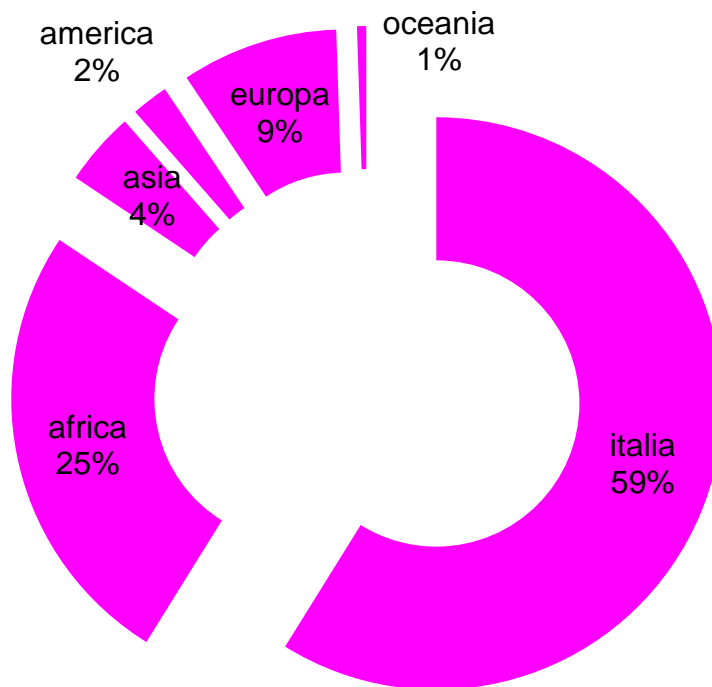
Panoramica Età





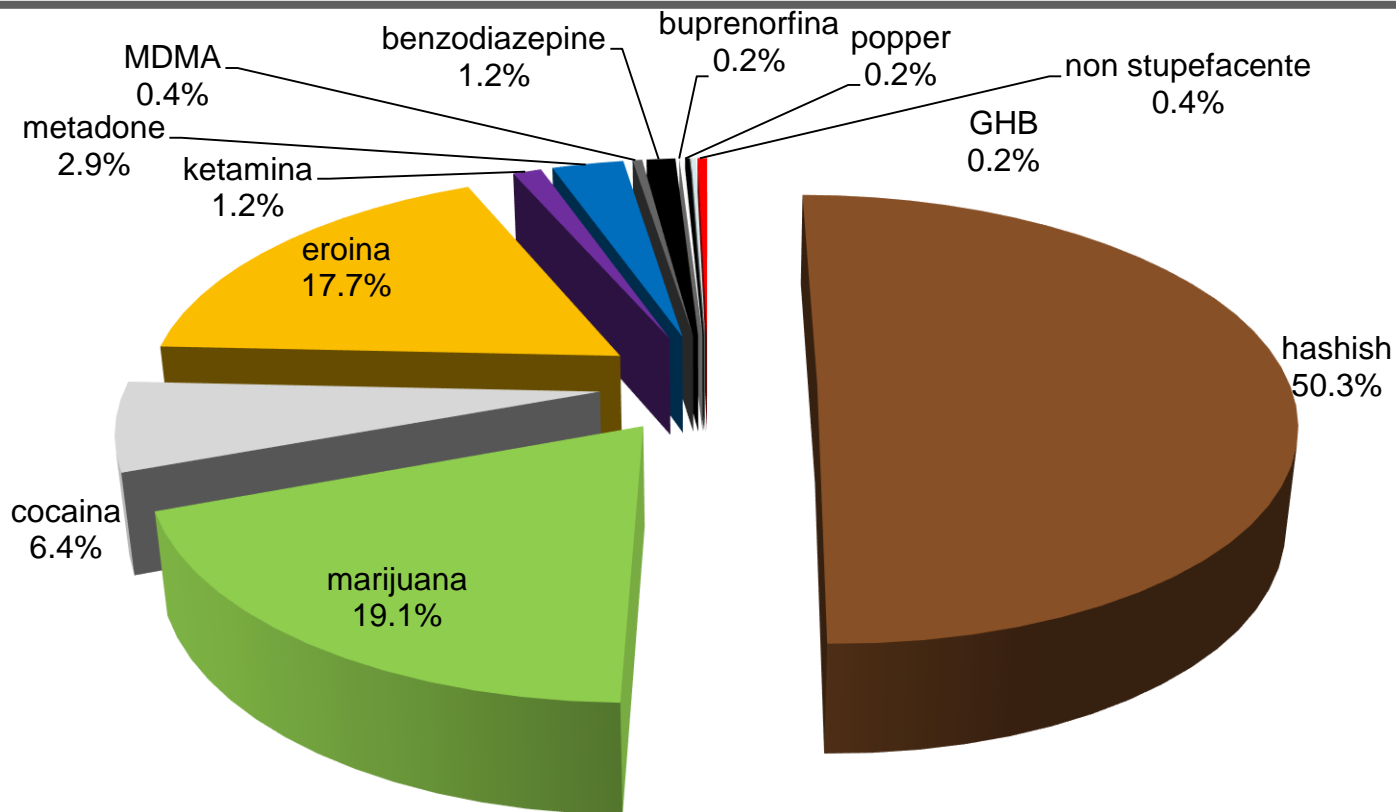
10 anni

Panoramica Nazionalità





10 anni



Sostanze sequestrate totali 10 anni



*Ringraziamento particolare alla **ditta Shimadzu** che ha sempre collaborato con il nostro laboratorio e in questa occasione ha dato grande collaborazione al Corpo di Polizia Municipale nella realizzazione di questo progetto finalizzato ad ampliare l'attività di controllo del territorio.*



Grazie per l'attenzione