

FONDAZIONE
FARE INSIEME
ONLUS

ROTARY CLUB BOLOGNA
fondato nel 1927



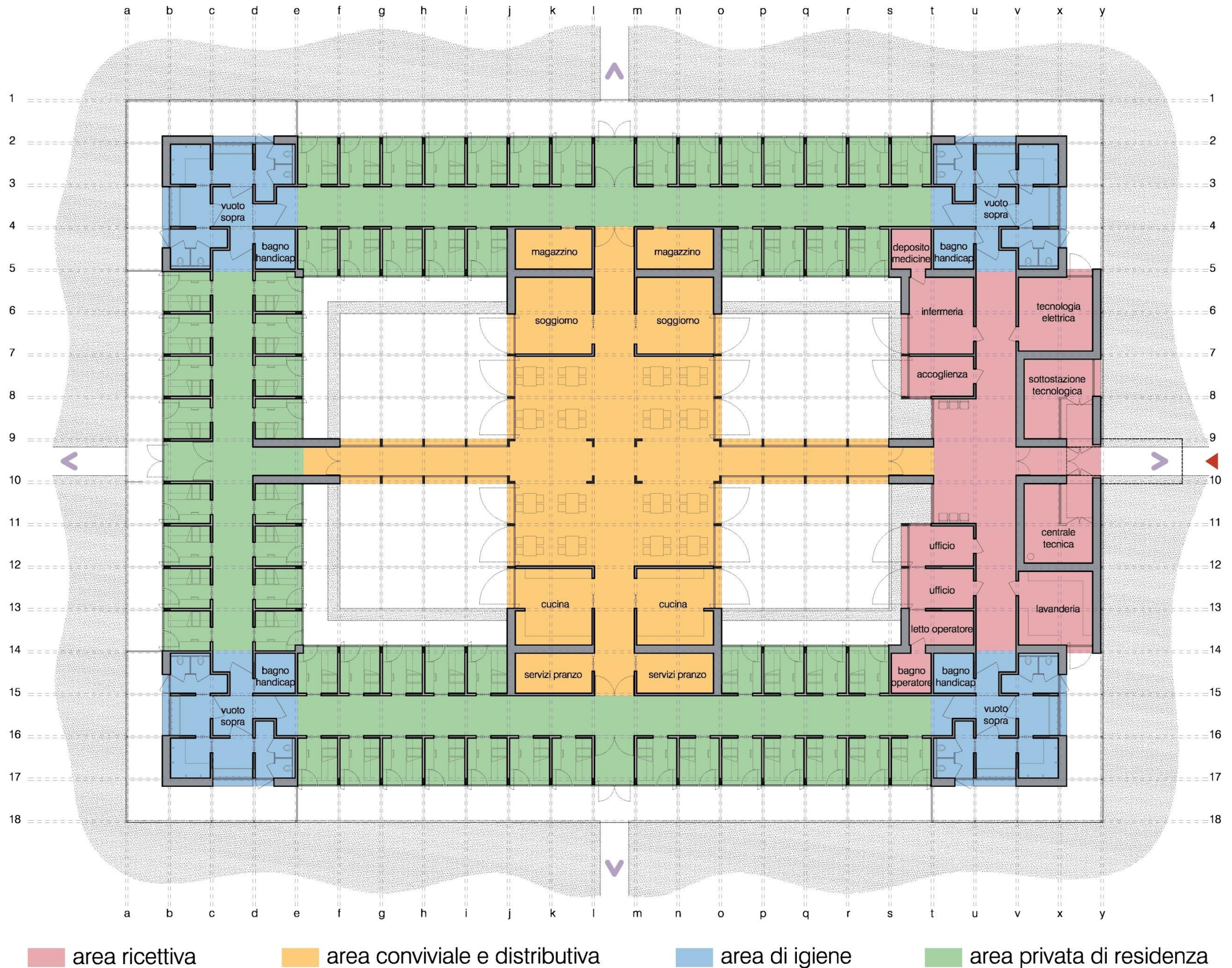
fausto arcuri ingegnere

mauro negrini ingegnere

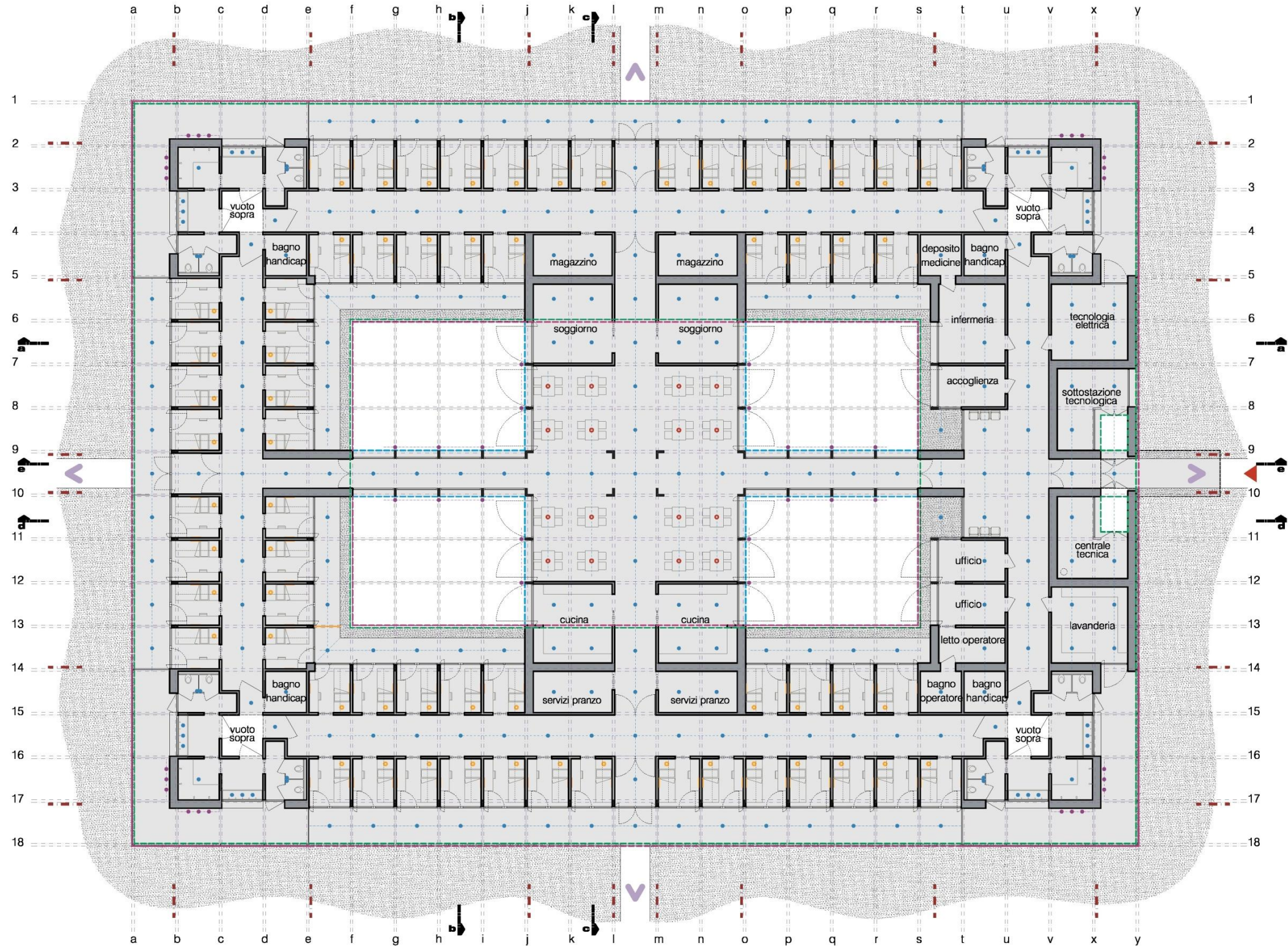
filippo ospitali ingegnere

andrea trebbi architetto

sezione orizzontale del piano a quota terreno - aree funzionali

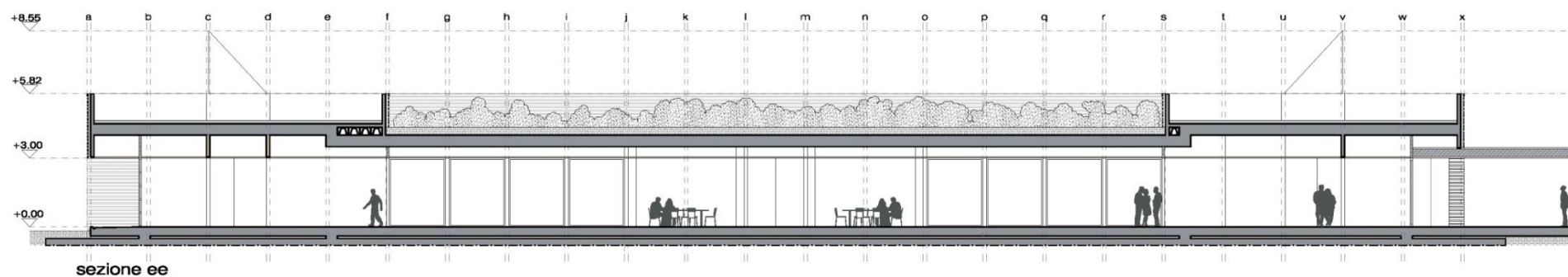
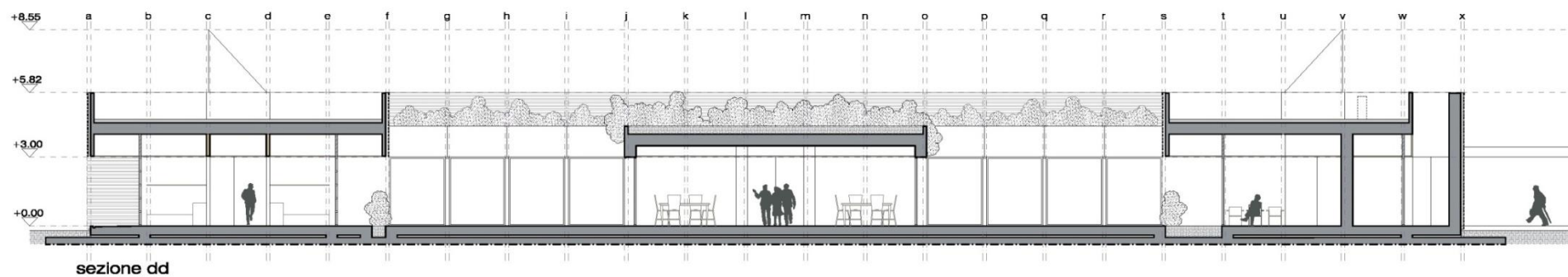
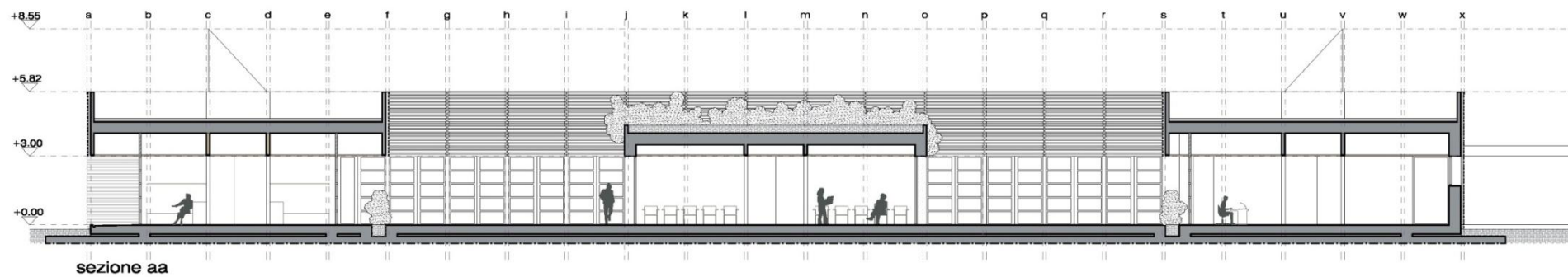
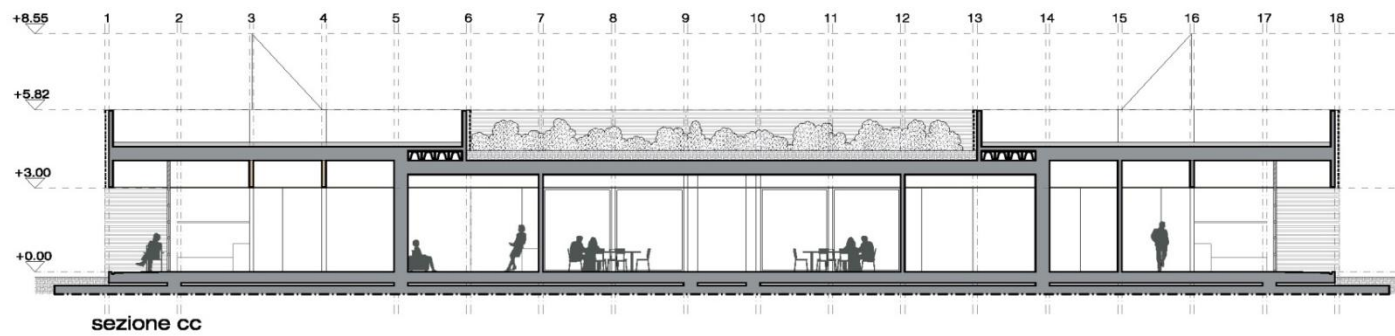
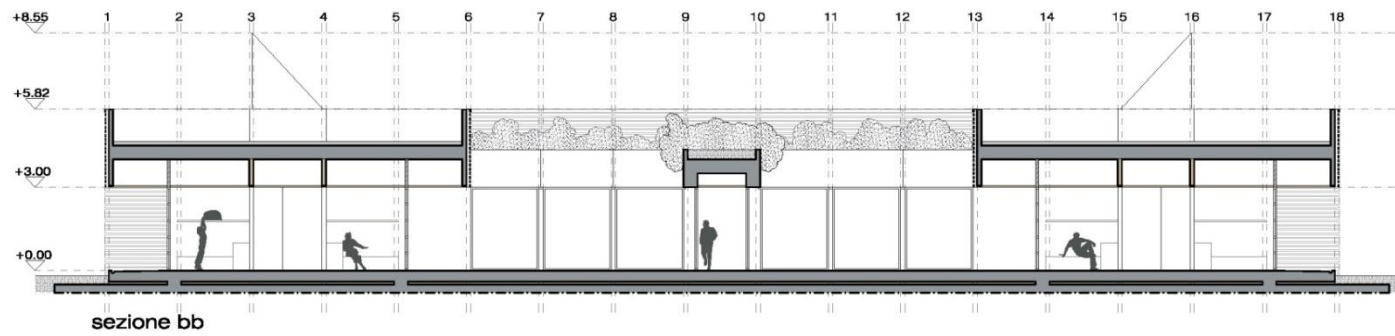


sezione orizzontale del piano a quota terreno – progetto architettonico

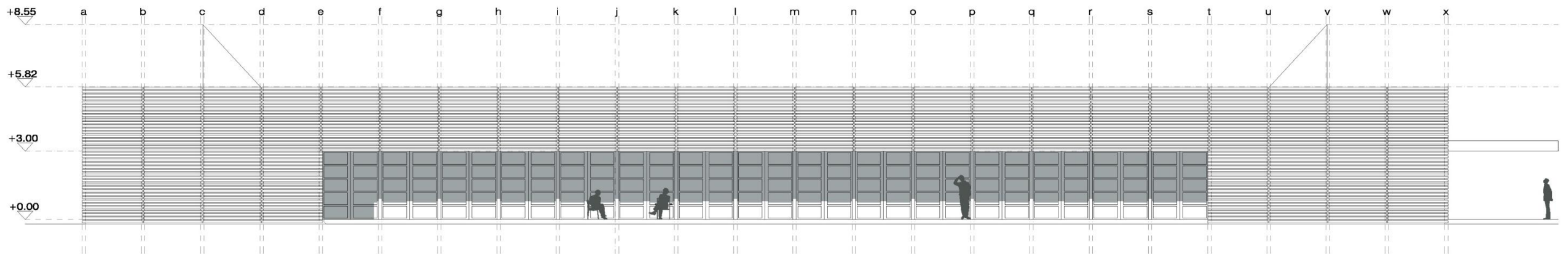
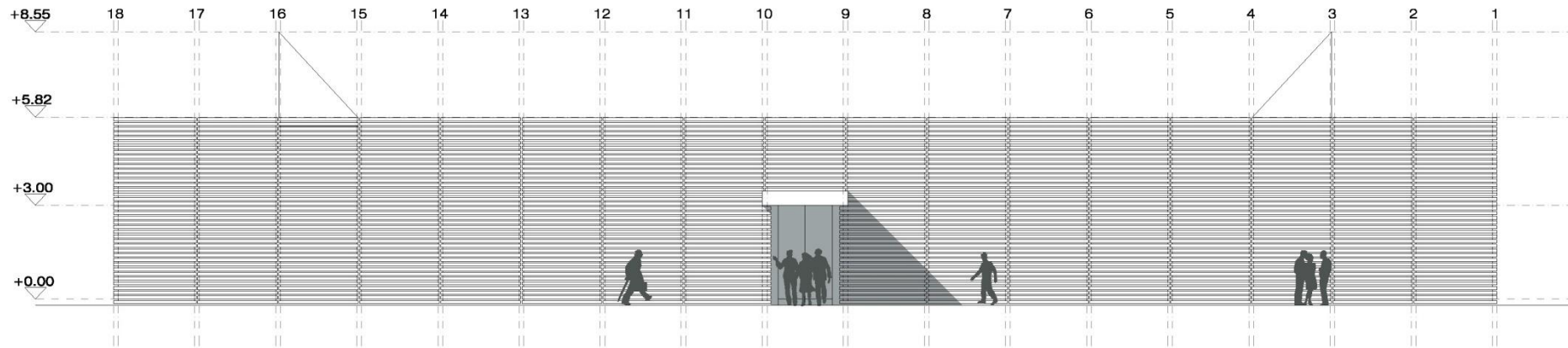


- controsoffitto h 300
- corpo illuminante da incasso a soffitto
- corpo illuminante da incasso a pavimento
- corpo illuminante a sospensione
- corpo illuminante in appoggio
- barra
- riferimenti strutturali

sezioni verticali



prospetti











Economic Corridor

Public Space